

**COVID-19 Initial Responses Communication System After Four Months in 12
Universities**

Ryota Sakurai, Roi Sawm Sumlut, and Seunghun J. Lee

Institute for Educational Research & Service, International Christian University

Author Note

Correspondence concerning this technical report should be addressed to the Institute for Educational Research & Service (IERS), International Christian University, Honkan Room 259, 3-10-2 Osawa, Mitaka, Tokyo, Japan.

Email: iers-mygroup@icu.ac.jp

IERS web page: <https://subsite.icu.ac.jp/iers>

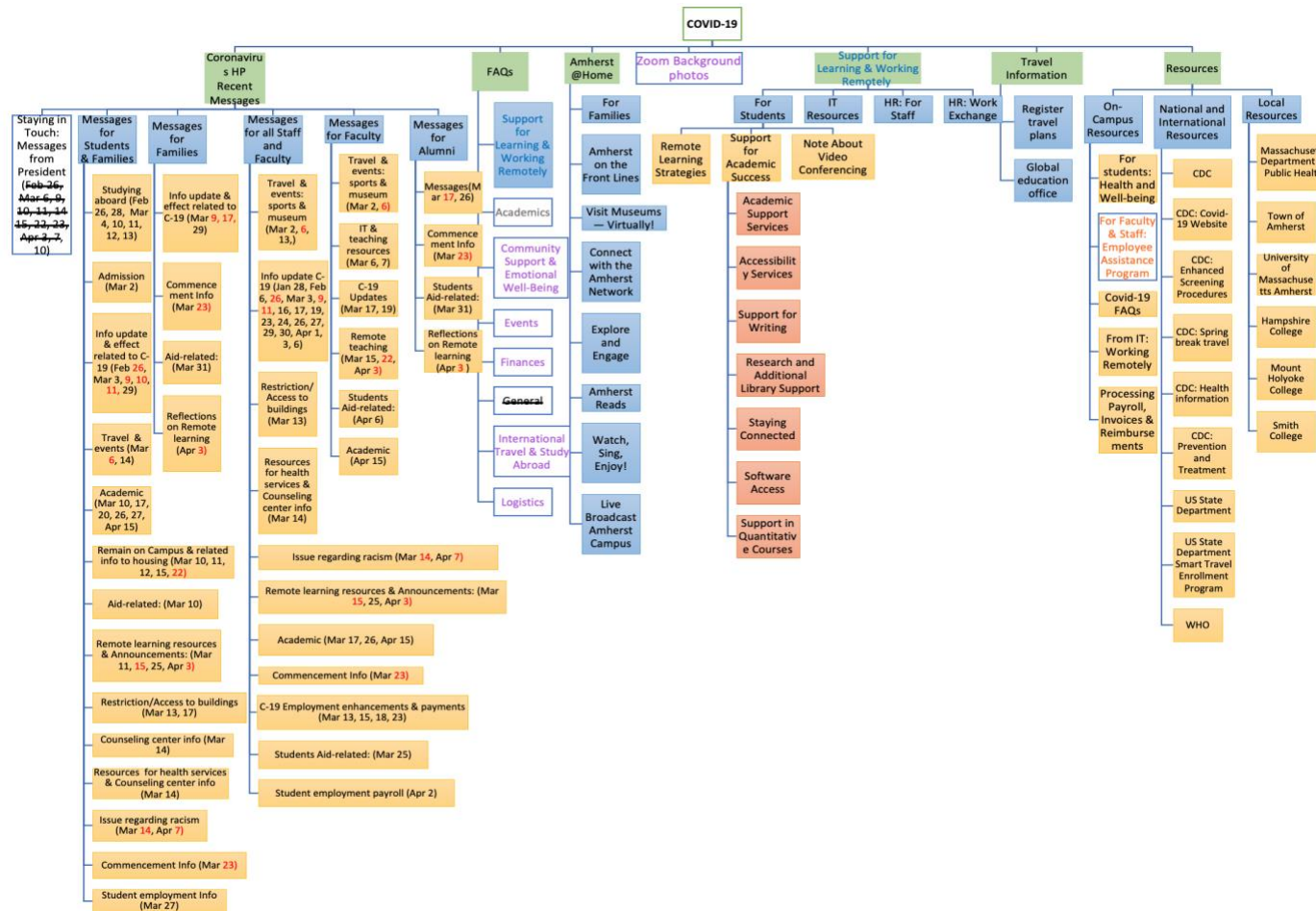
Description

This technical report is a sequel to the earlier report, titled “COVID-19 Initial Responses Communication System in Twelve Universities.” The purpose of updating the original data is to examine what types of information were accessible and what was not after four months from the initial research. The revision process consists of two steps: revisiting 12 liberal arts institutions’ websites and comparing them with the original data; making changes to the data according to the research findings. The renewed twelve charts in this report thus describe the traces of the institutions’ responses in disaster communication during the ongoing COVID-19 crisis. All of this work was conducted from August 14 to 28, 2020.

Note. The gathered information of affinity diagrams was available on each university COVID-19 Updates’ main page, and the original sites are not any more accessible as of December 2020.

Figure 1

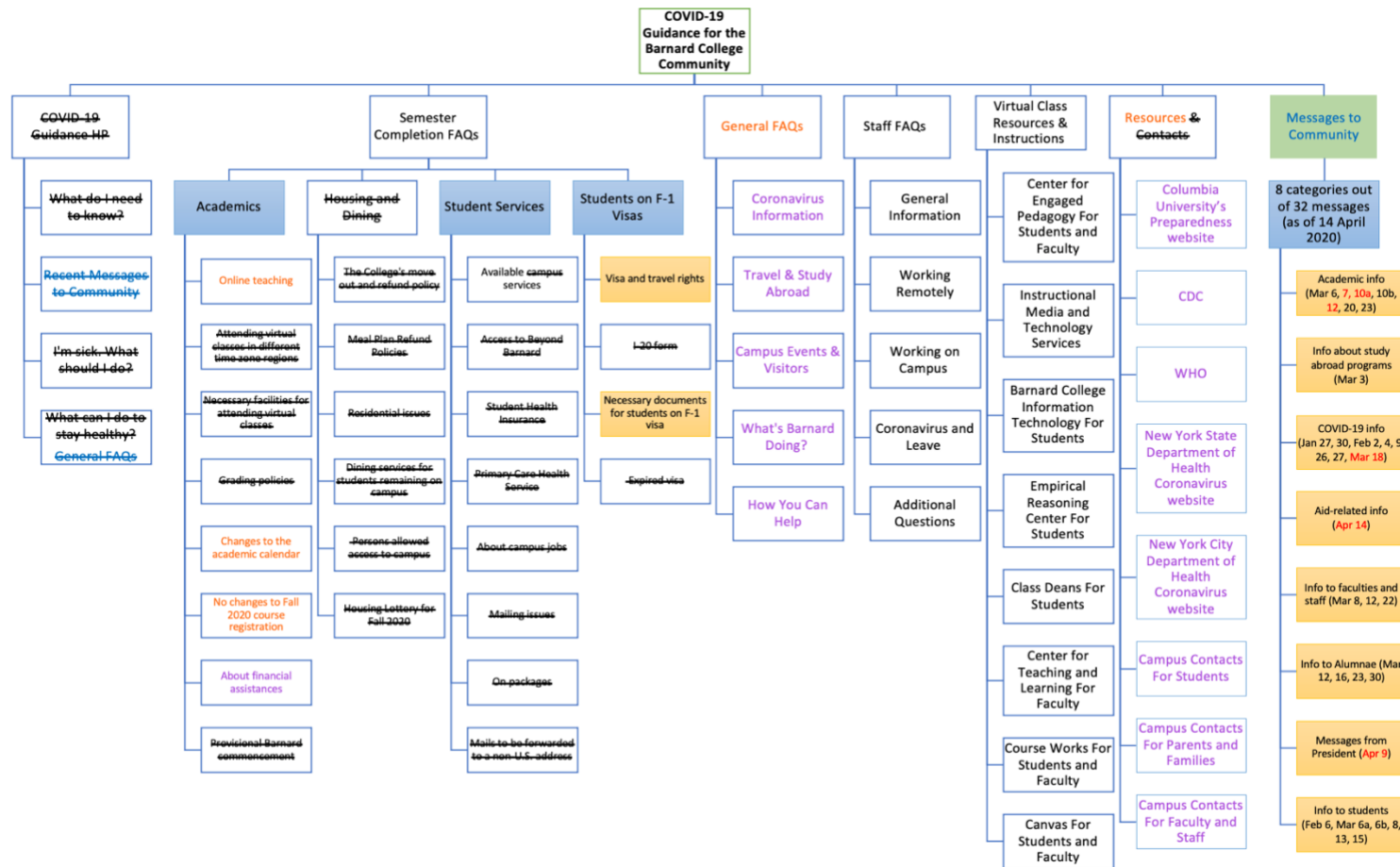
COVID-19 Response Chart Based on Publicly Available Information of the Amherst College



Note. The red color represents messages from the president. The blue color represents overlapped between categories. The purple color represents the original data was moved/ replaced/ juxtaposed (in)to other sections or renamed topics. The orange color represents the original data was renamed something else. The gray color represents the original data was incorporated/ dissolved into other sections.

Figure 2

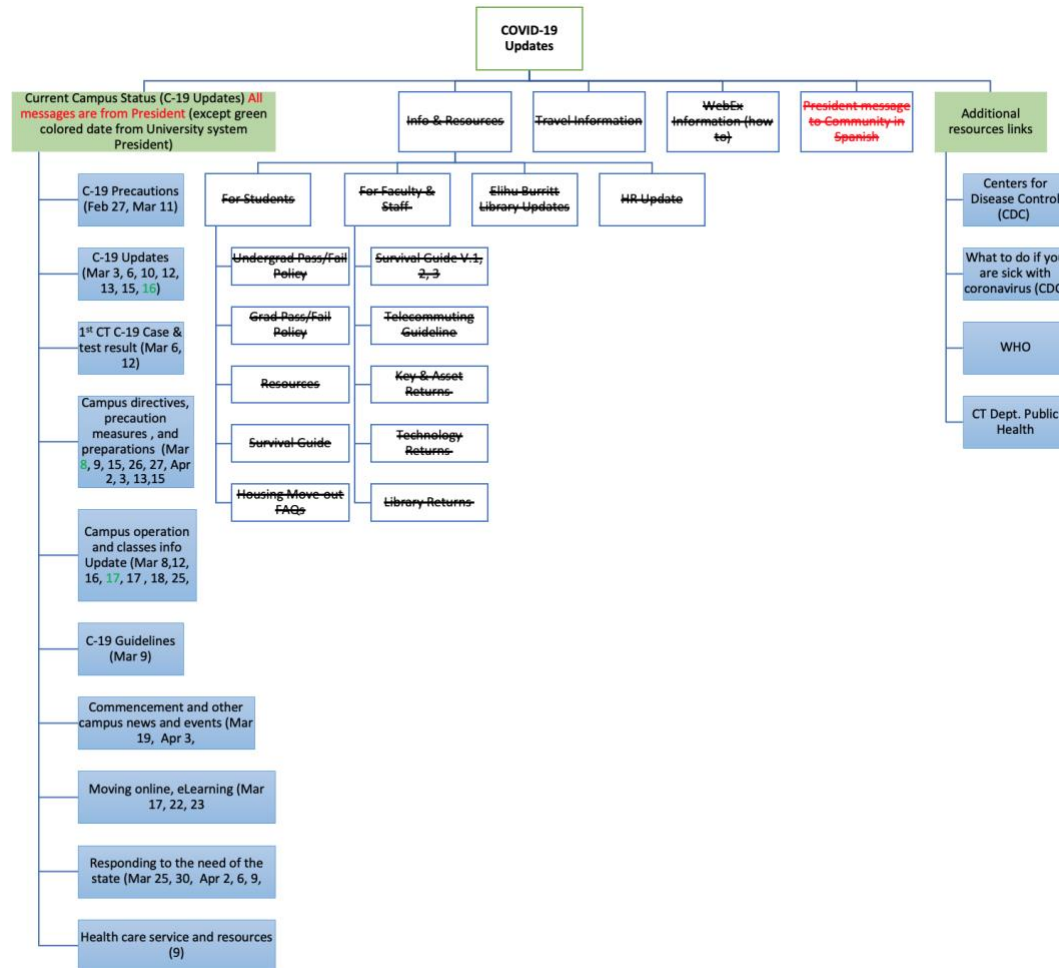
COVID-19 Response Chart Based on Publicly Available Information of the Barnard College



Note. The red color represents messages from the president. The blue color represents overlapped between categories. The purple color represents the original data was moved/ replaced/ juxtaposed (in)to other sections or renamed topics. The orange color represents the original data was renamed something else.

Figure 3

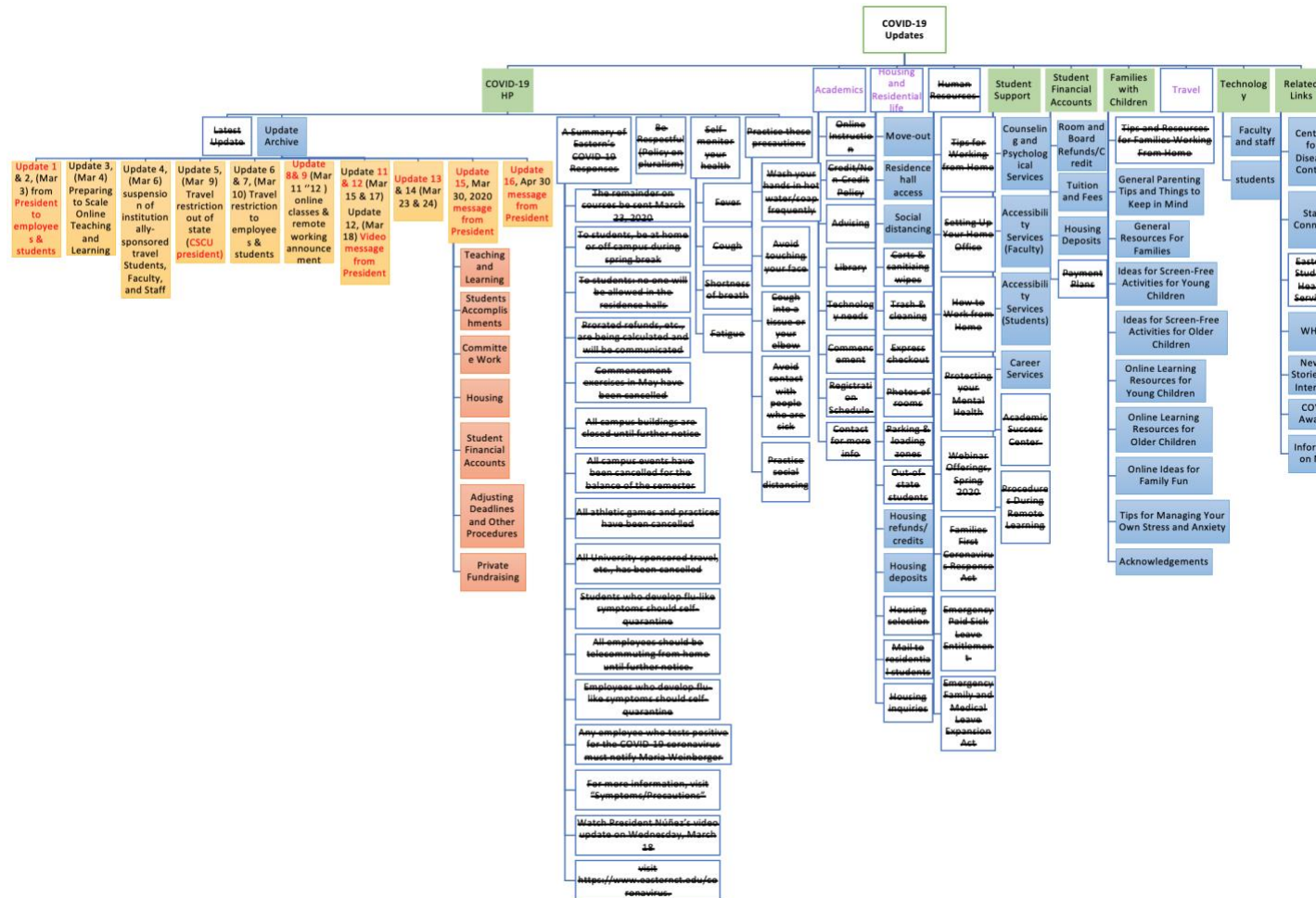
COVID-19 Response Chart Based on Publicly Available Information of the Central Connecticut State University



Note. The red color represents messages from the president. The green color represents messages from the university system president.

Figure 4

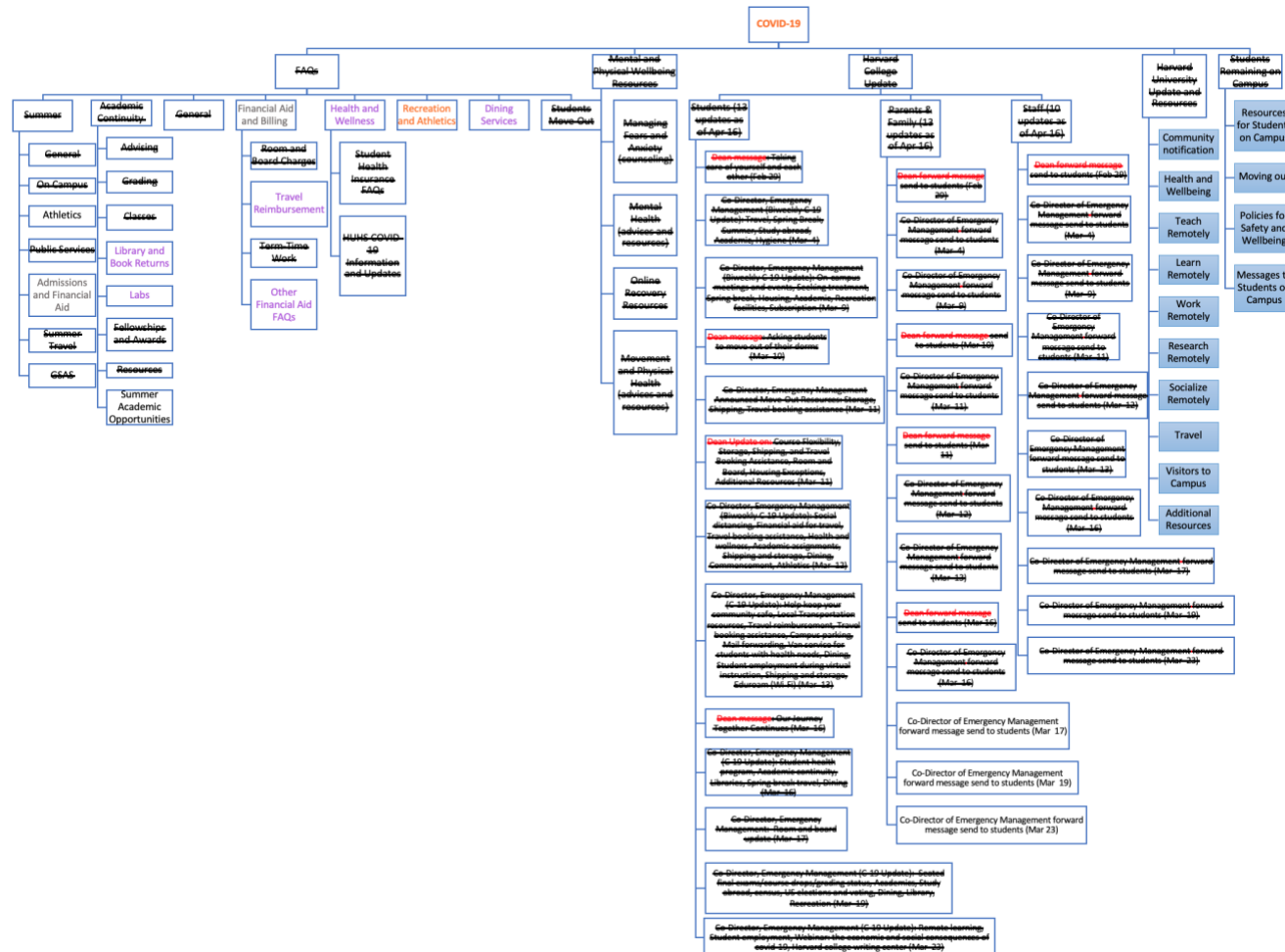
COVID-19 Response Chart Based on Publicly Available Information of the Eastern Connecticut State University



Note. The red color represents messages from the president. The purple color represents the original data was moved/ replaced/ juxtaposed (in)to other sections or renamed topics.

Figure 5

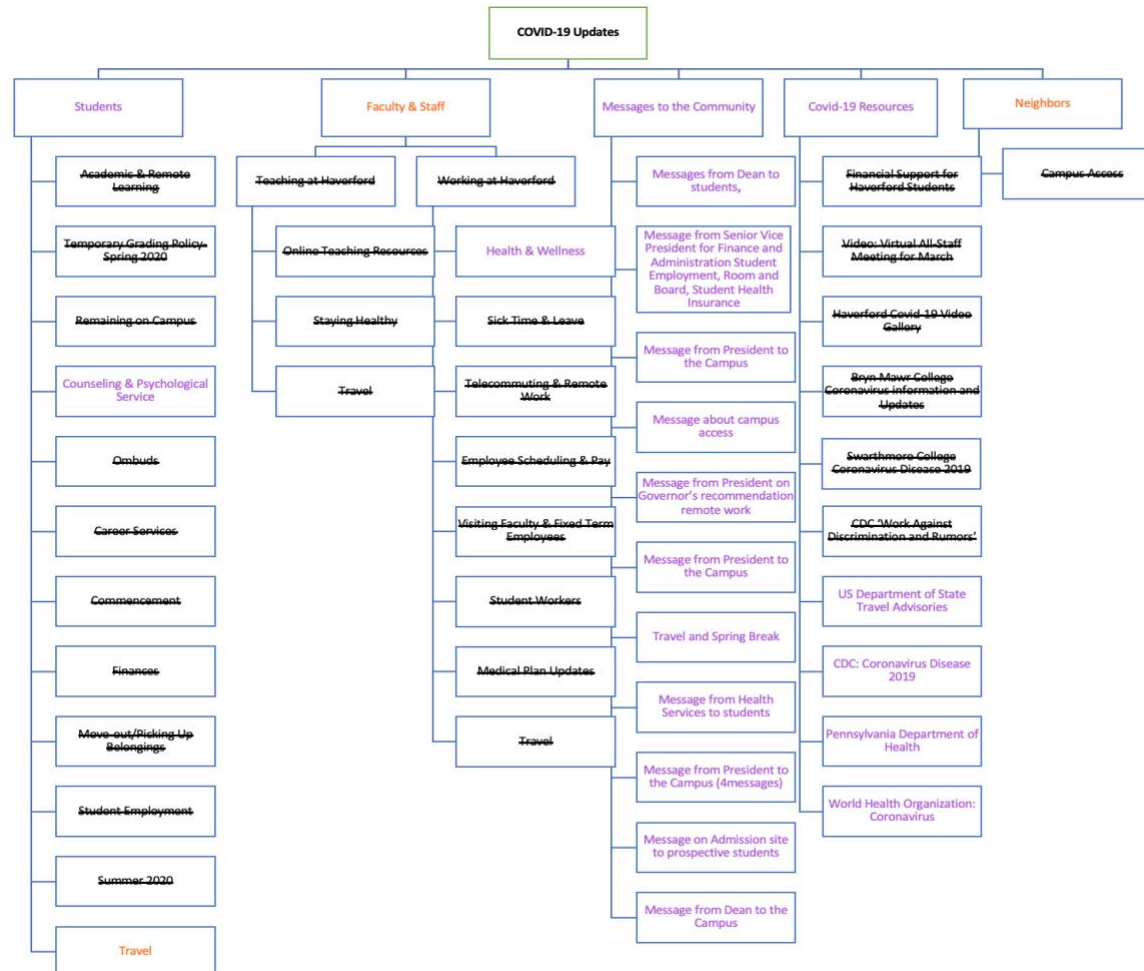
COVID-19 Response Chart Based on Publicly Available Information of the Harvard College



Note. The red color represents messages from the president. The purple color represents the original data was moved/ replaced/ juxtaposed (in)to other sections or renamed topics. The orange color represents the original data was renamed something else. The gray color represents the original data was incorporated/ dissolved into other sections.

Figure 6

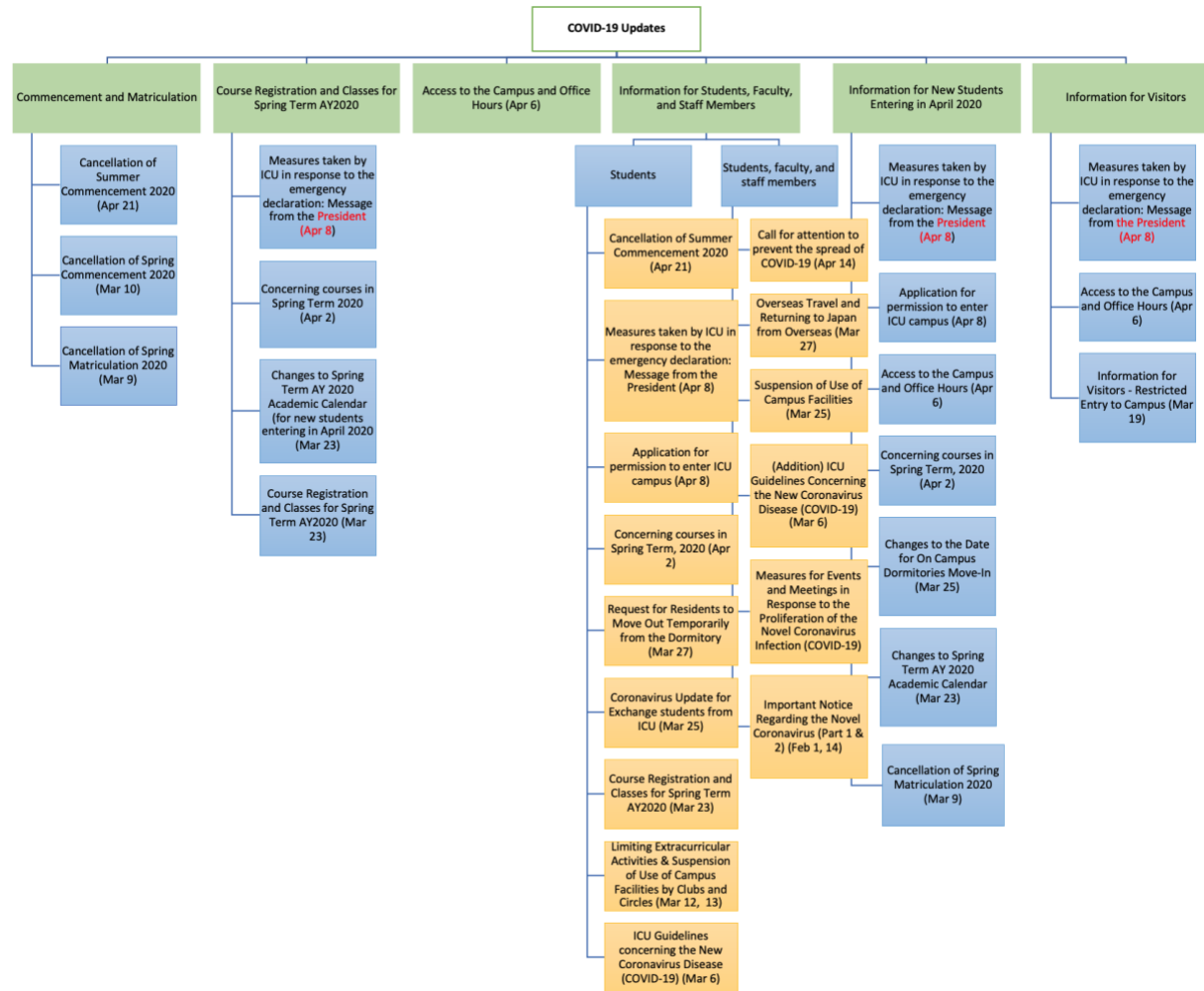
COVID-19 Response Chart Based on Publicly Available Information of the Haverford College



Note. The purple color represents the original data was moved/ replaced/ juxtaposed (in)to other sections or renamed topics. The orange color represents the original data was renamed something else.

Figure 7

COVID-19 Response Chart Based on Publicly Available Information of the International Christian University, Japan



Note. The red color represents messages from the President.

COVID-19 Response Chart Based on Publicly Available Information of the Middlebury College

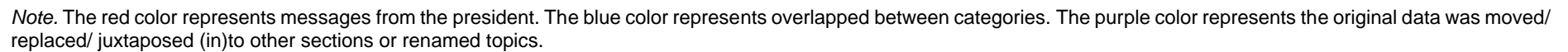
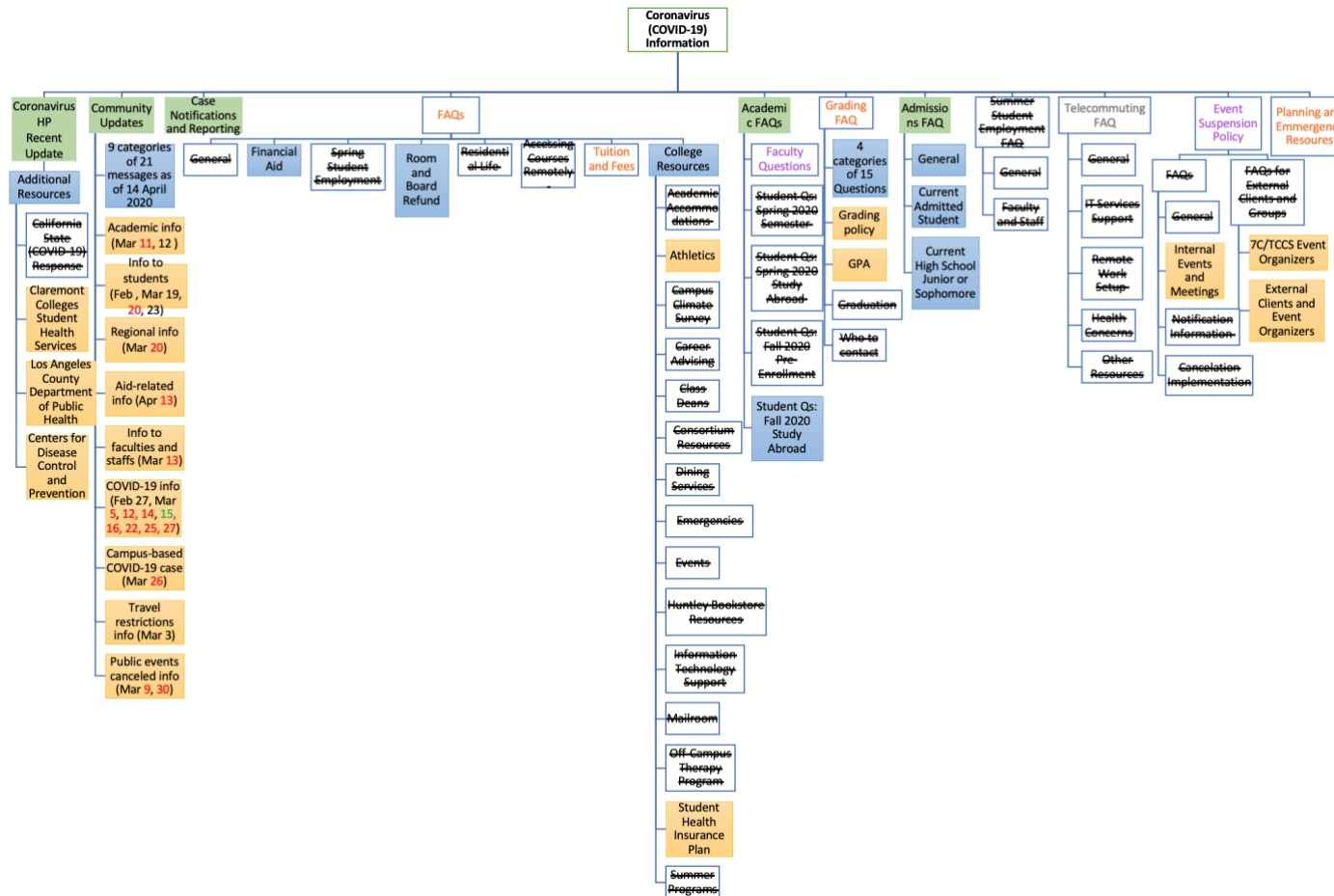


Figure 9

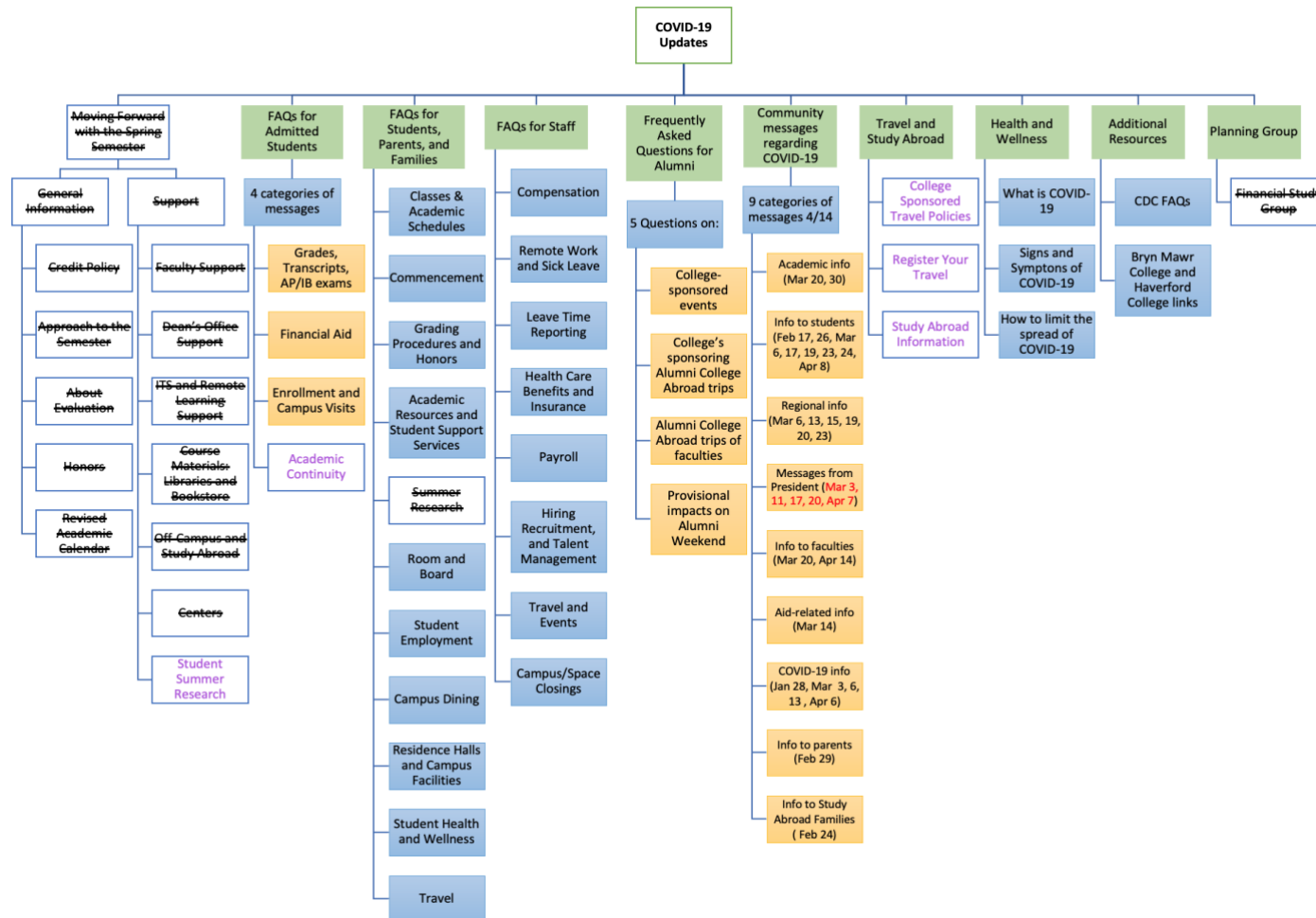
COVID-19 Response Chart Based on Publicly Available Information of the Pomona College



Note. The red color represents messages from the president. The green color represents a message from the president with other authority. The purple color represents the original data was moved/ replaced/ juxtaposed (in)to other sections or renamed topics. The orange color represents the original data was renamed something else. The gray color represents the original data was incorporated/ dissolved into other sections.

Figure 10

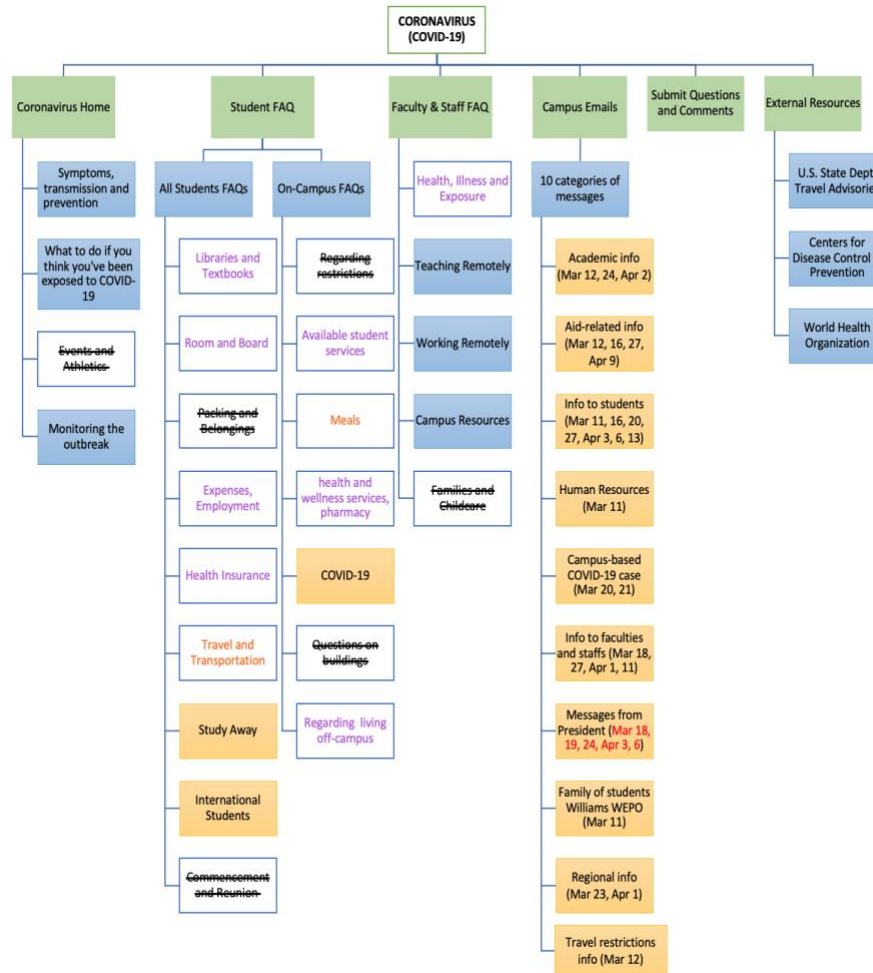
COVID-19 Response Chart Based on Publicly Available Information of the Swarthmore College



Note. The red color represents messages from the president. The purple color represents the original data was moved/ replaced/ juxtaposed (in)to other sections or renamed topics.

Figure 11

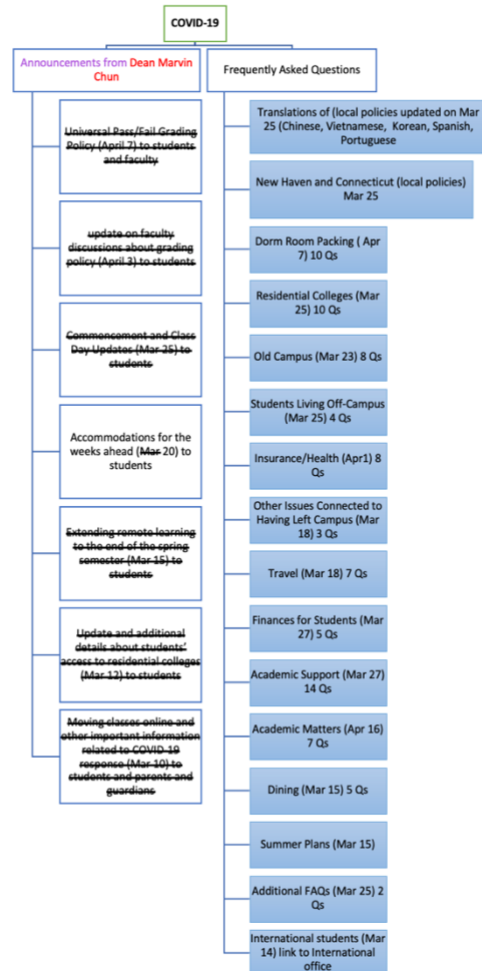
COVID-19 Response Chart Based on Publicly Available Information of the Williams College



Note. The red color represents messages from the president. The purple color represents the original data was moved/ replaced/ juxtaposed (in)to other sections or renamed topics. The orange color represents the original data was renamed something else.

Figure 12

COVID-19 Response Chart Based on Publicly Available Information of the Yale College



Note. The red color represents messages from the president. The purple color represents the original data was moved/ replaced/ juxtaposed (in)to other sections or renamed topics.

References

- Community Announcement: Important Update.* (n.d.). Middlebury.
<https://www.middlebury.edu/office/midd2021>
- Coronavirus (COVID-19).* (n.d.). Williams. <https://www.williams.edu/coronavirus/>
- Coronavirus (COVID-19) Information.* (n.d.). Central Connecticut State University.
<https://www.ccsu.edu/coronavirus/dashboard.html>
- Coronavirus (COVID-19): Information for the Harvard College Community.* (n.d.). Harvard College. <https://college.harvard.edu/ourpathforward>
- Coronavirus (COVID-19): Information for the Pomona College Community.* (n.d.). Pomona College. <https://www.pomona.edu/coronavirus>
- Coronavirus Information.* (n.d.). Haverford College. <https://www.haverford.edu/be-safe>
- COVID-19 Announcements and FAQs.* (n.d.). Yale College. <https://yalecollege.yale.edu/policies-procedures/covid-19-faq>
- COVID-19.* (n.d.). Amherst College. <https://www.amherst.edu/admission/covid-19-considerations>
- COVID-19 Information.* (n.d.). Swarthmore. <https://www.swarthmore.edu/covid-19-information>
- COVID-19 Updates.* (n.d.). Eastern Connecticut State University.
<https://www.easternct.edu/reopening/index.html>
- Information and Updates: Coronavirus Disease 2019 (COVID-19).* (n.d.). Barnard.
<https://alert.barnard.edu/>
- News: ICU's Response to the Novel Coronavirus Infection (COVID-19).* (n.d.). International Christian University. <https://www.icu.ac.jp/en/news/2003031445.html>