

## **COVID-19 Initial Responses Communication System in 12 Universities**

Roi Sawm Sumlut, Ryota Sakurai, and Seunghun J. Lee

Institute for Educational Research & Service, International Christian University

### **Author Note**

Correspondence concerning this technical report should be addressed to the Institute for Educational Research & Service (IERS), International Christian University, Honkan Room 259, 3-10-2 Osawa, Mitaka, Tokyo, Japan.

Email: [iers-mygroup@icu.ac.jp](mailto:iers-mygroup@icu.ac.jp)

IERS web page: <https://subsite.icu.ac.jp/iers>

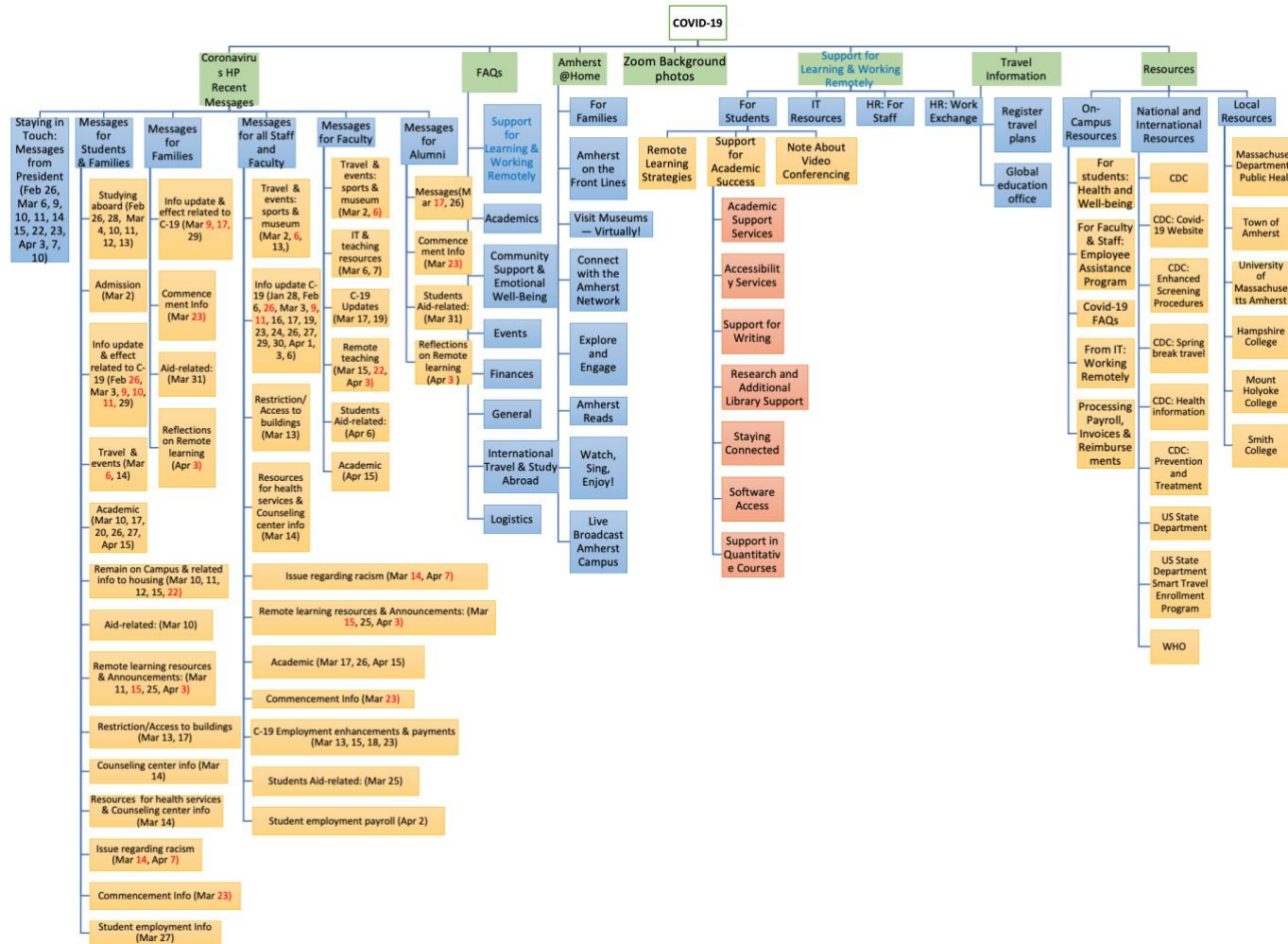
**Description**

This technical report is composed of twelve KJ (Kawakita Jiro) charts about the COVID-19 response based on publicly available information of 12 liberal arts institutions' websites. The purpose of analyzing each institute's COVID-19 webpage is to investigate what kinds of COVID-19 pandemic communication strategies of these 12 liberal arts institutions, 11 in the United States and one in Japan, employed. The publicly accessible content of initiatives and communication methods of these institutions' websites were analyzed employing the KJ method, KJ-Ho, (Kawakita, 1991) to sort large numbers of data into categories. Thus, each chart shows each institution's website's structure on the COVID-19 pandemic responses. The twelve charts presented below correspond to the period that marks the beginning of the COVID-19 pandemic to April 16th, 2020, the end date of the initial data collection.

*Note.* The gathered information of affinity diagrams was available on each university COVID-19 Updates' main page, and the original sites are not any more accessible as of December 2020.

Figure 1

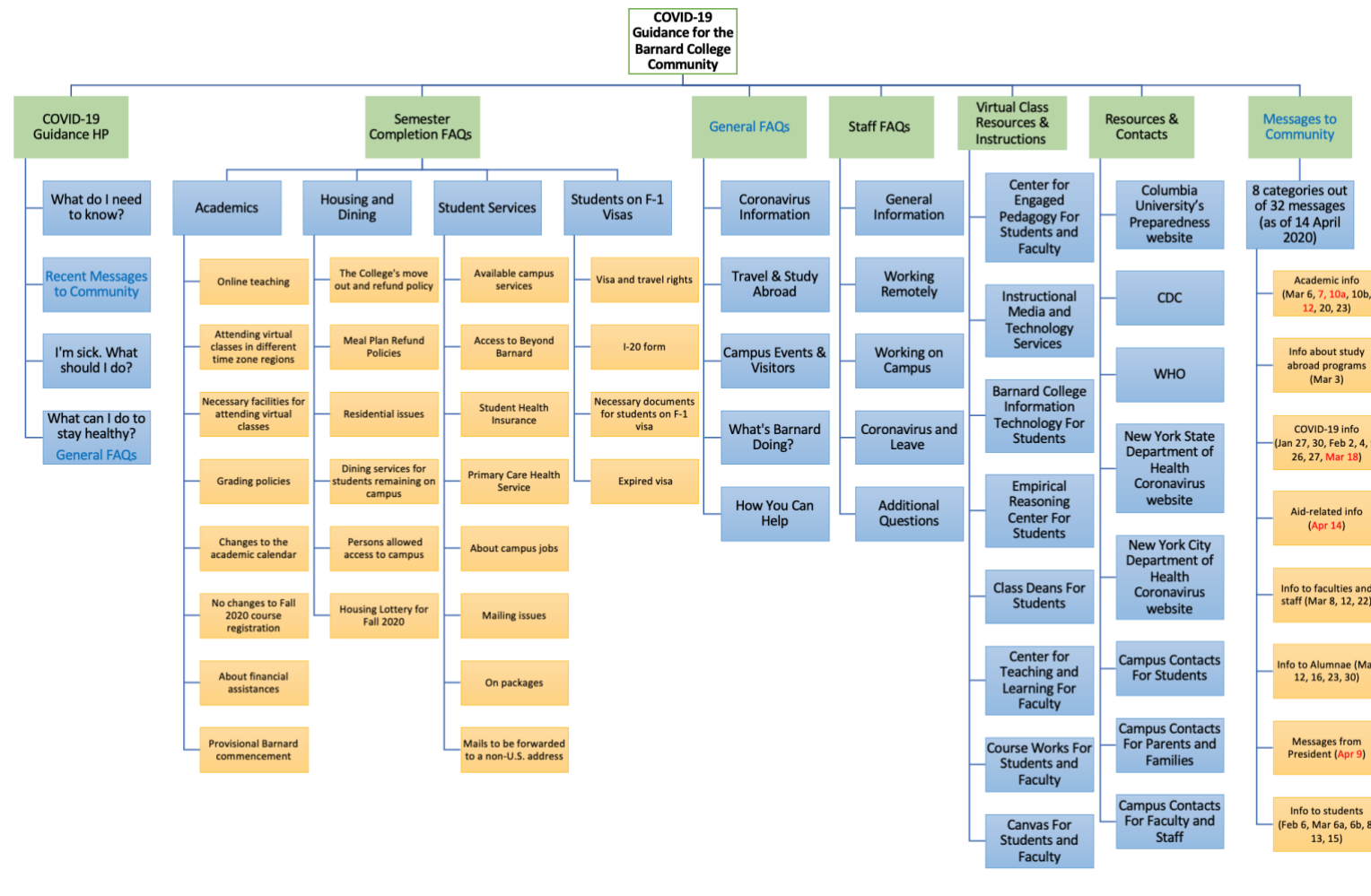
COVID-19 Response Chart Based on Publicly Available Information of the Amherst College



Note. The red color represents messages from the president. Blue color represents overlaps between categories.

Figure 2

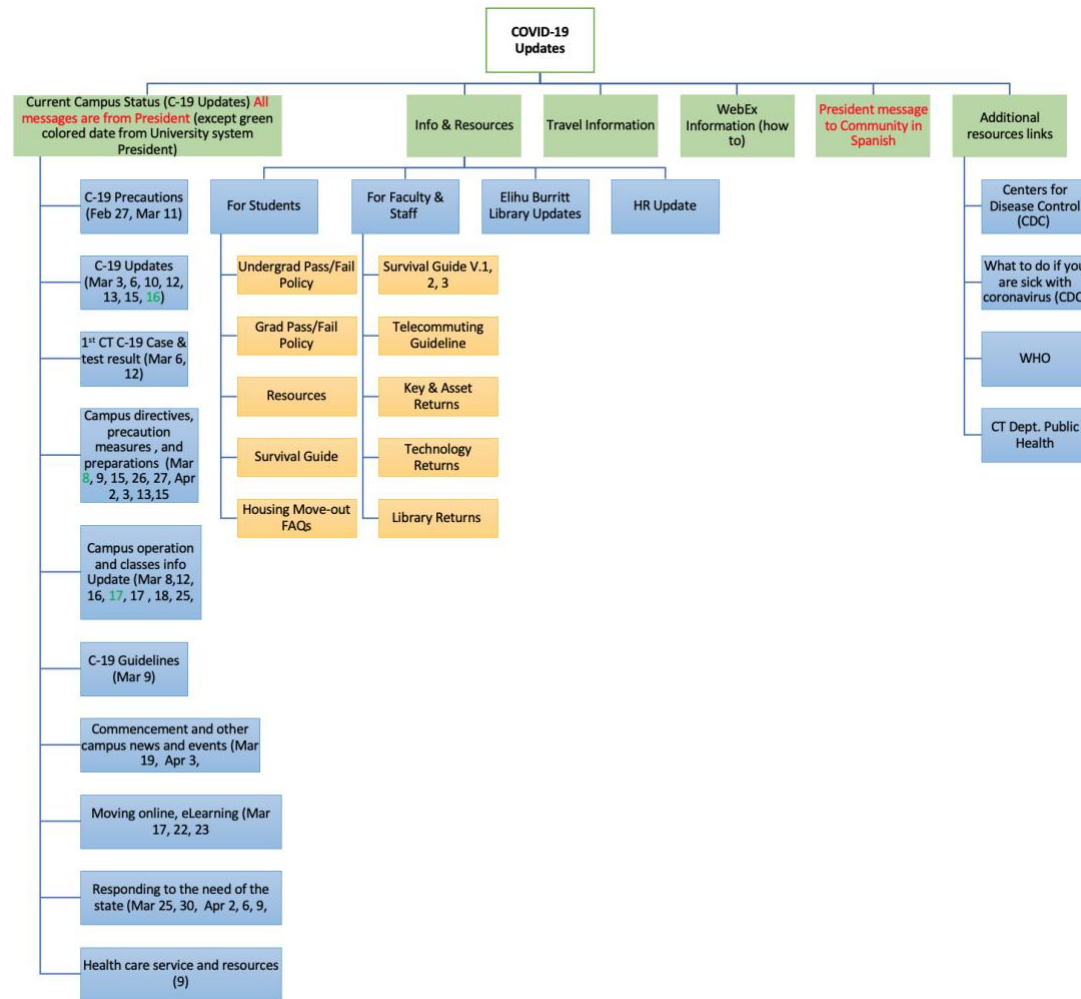
COVID-19 Response Chart Based on Publicly Available Information of the Barnard College



Note. The red color represents messages from the president. The blue color represents overlaps between categories.

**Figure 3**

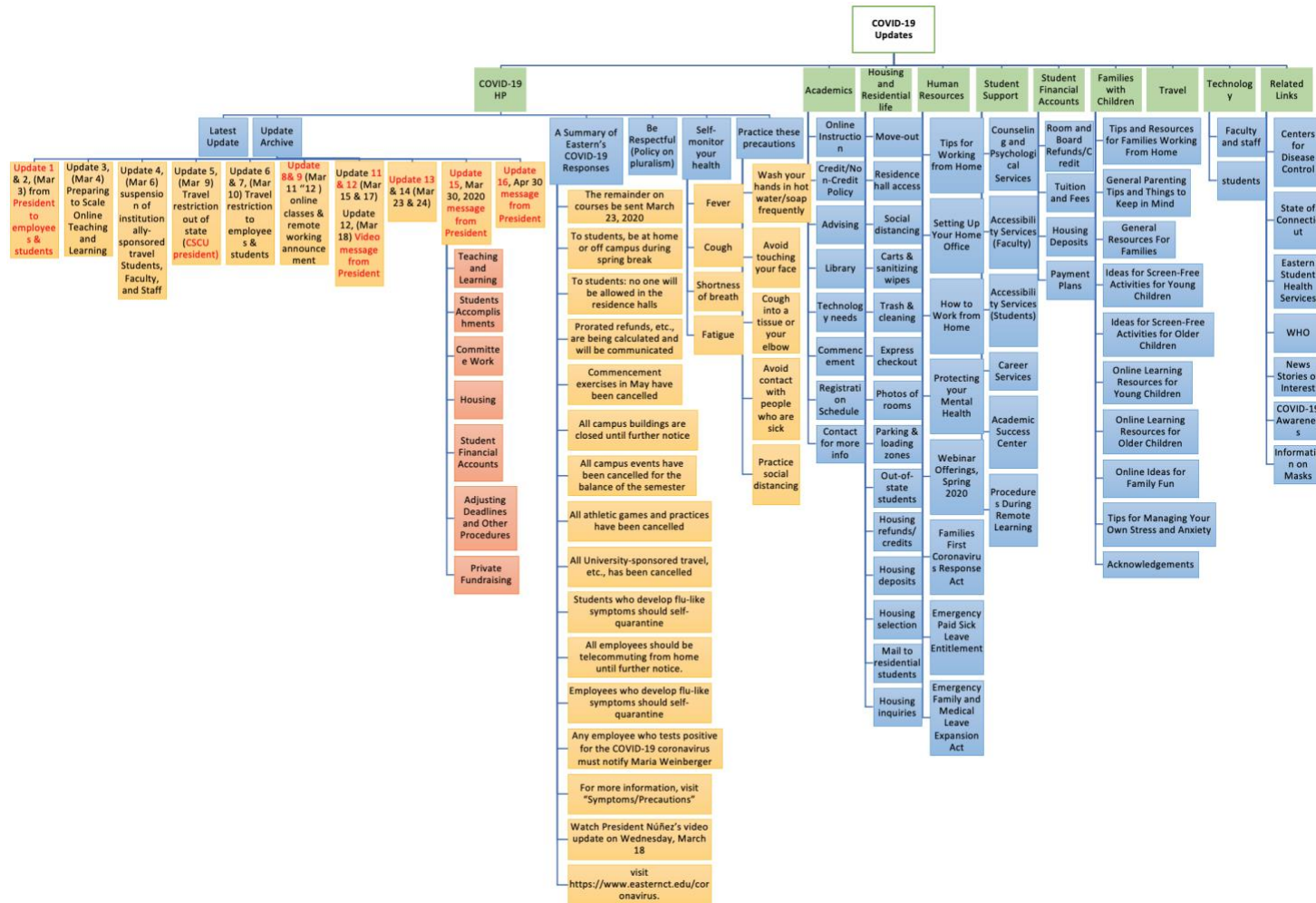
*COVID-19 Response Chart Based on Publicly Available Information of the Central Connecticut State University*



*Note.* The red color represents messages from the president. The green color represents messages from the university system president.

Figure 4

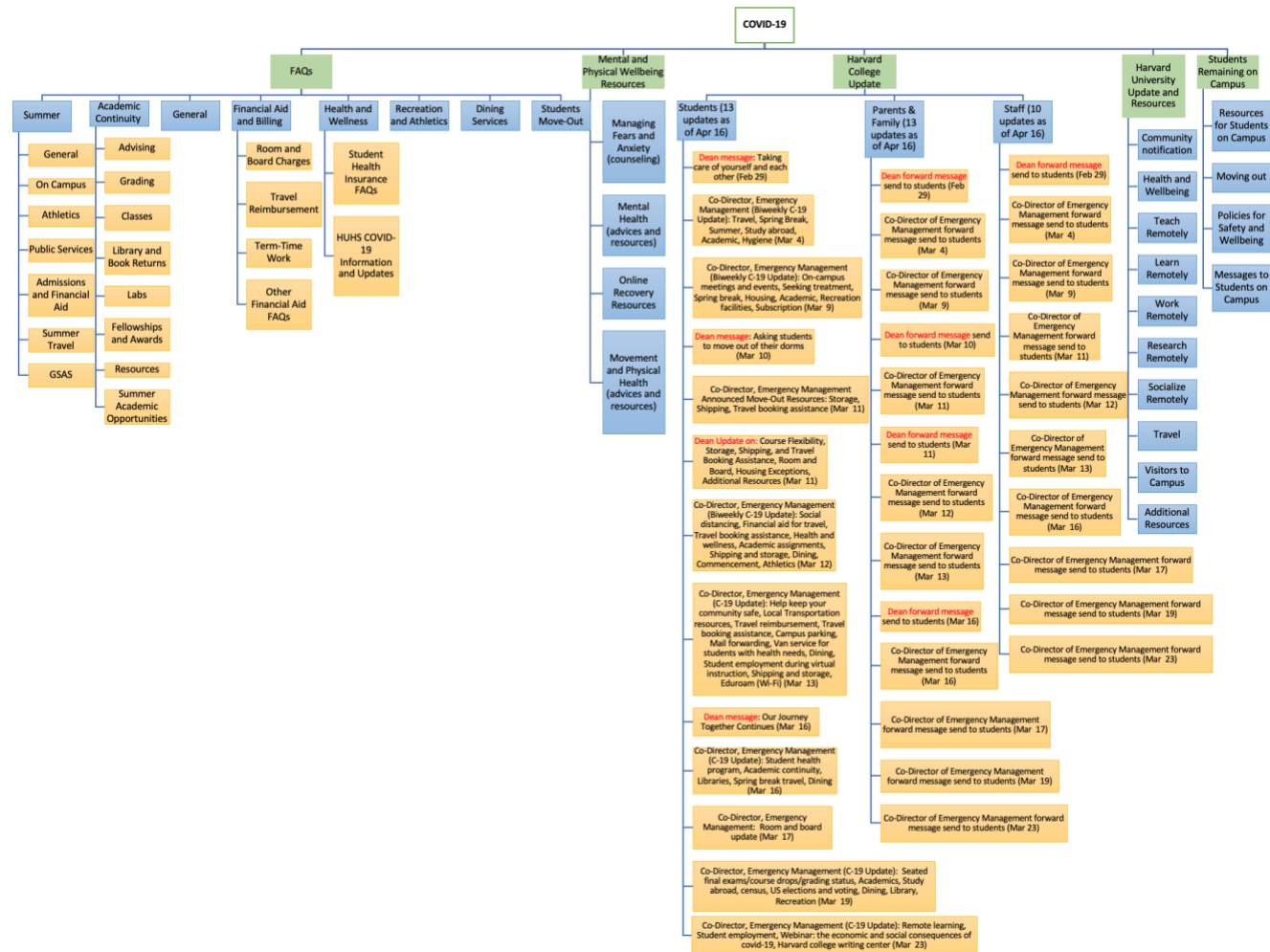
COVID-19 Response Chart Based on Publicly Available Information of the Eastern Connecticut State University



Note. The red color represents messages from the president.

Figure 5

COVID-19 Response Chart Based on Publicly Available Information of the Harvard College



Note. The red color represents messages from the dean.



**Figure 6**

*COVID-19 Response Chart Based on Publicly Available Information of the Haverford College*

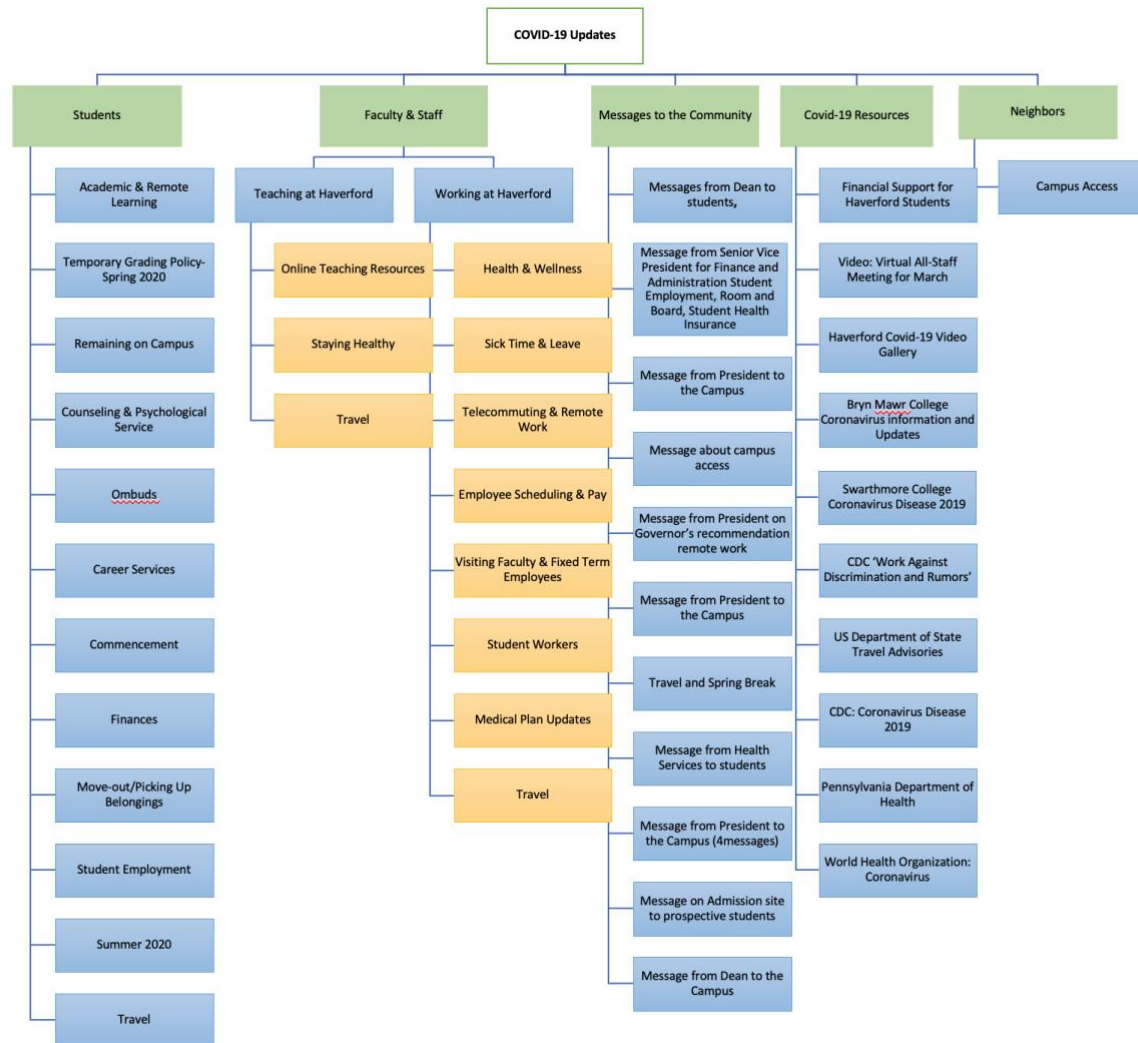
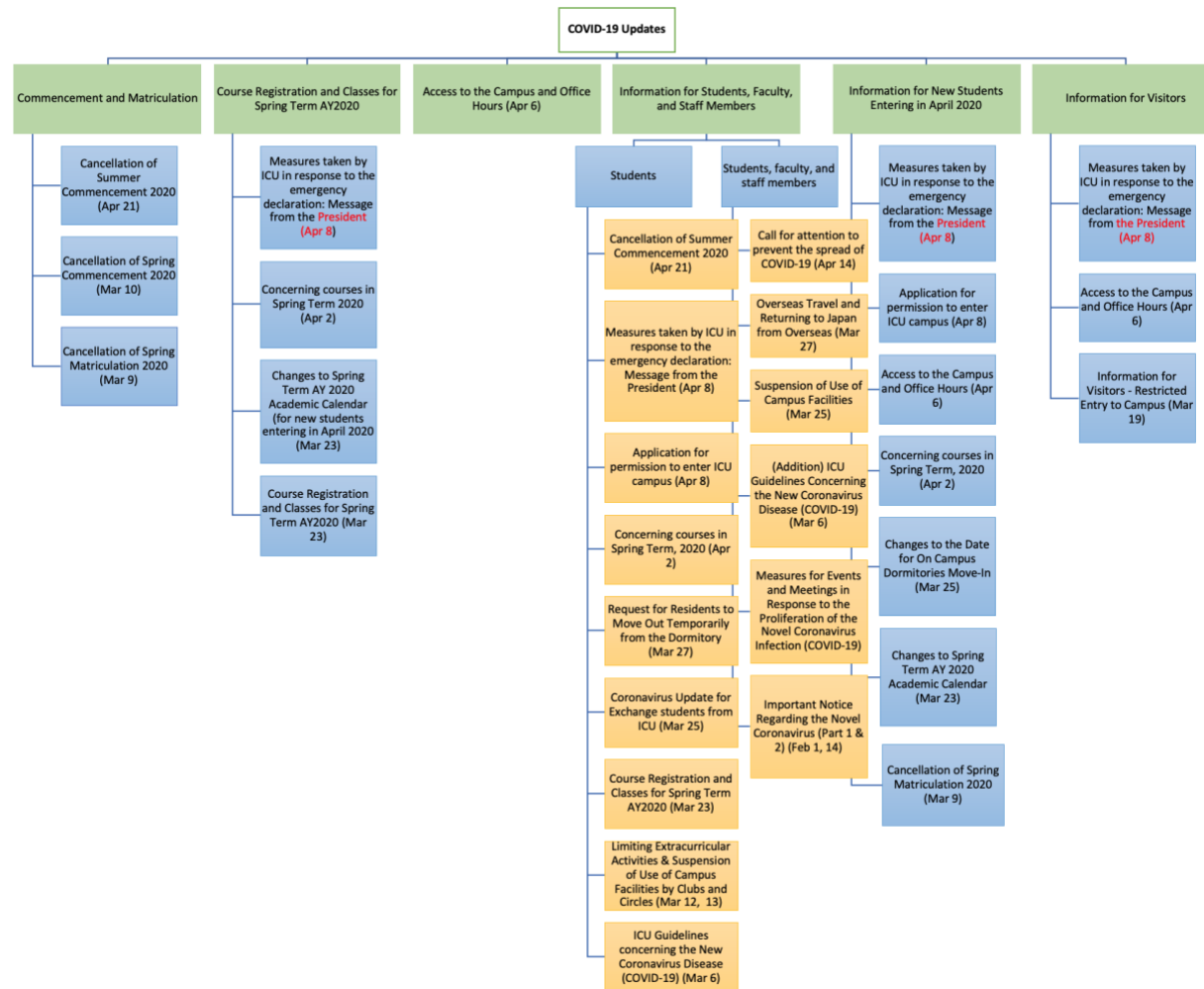




Figure 7

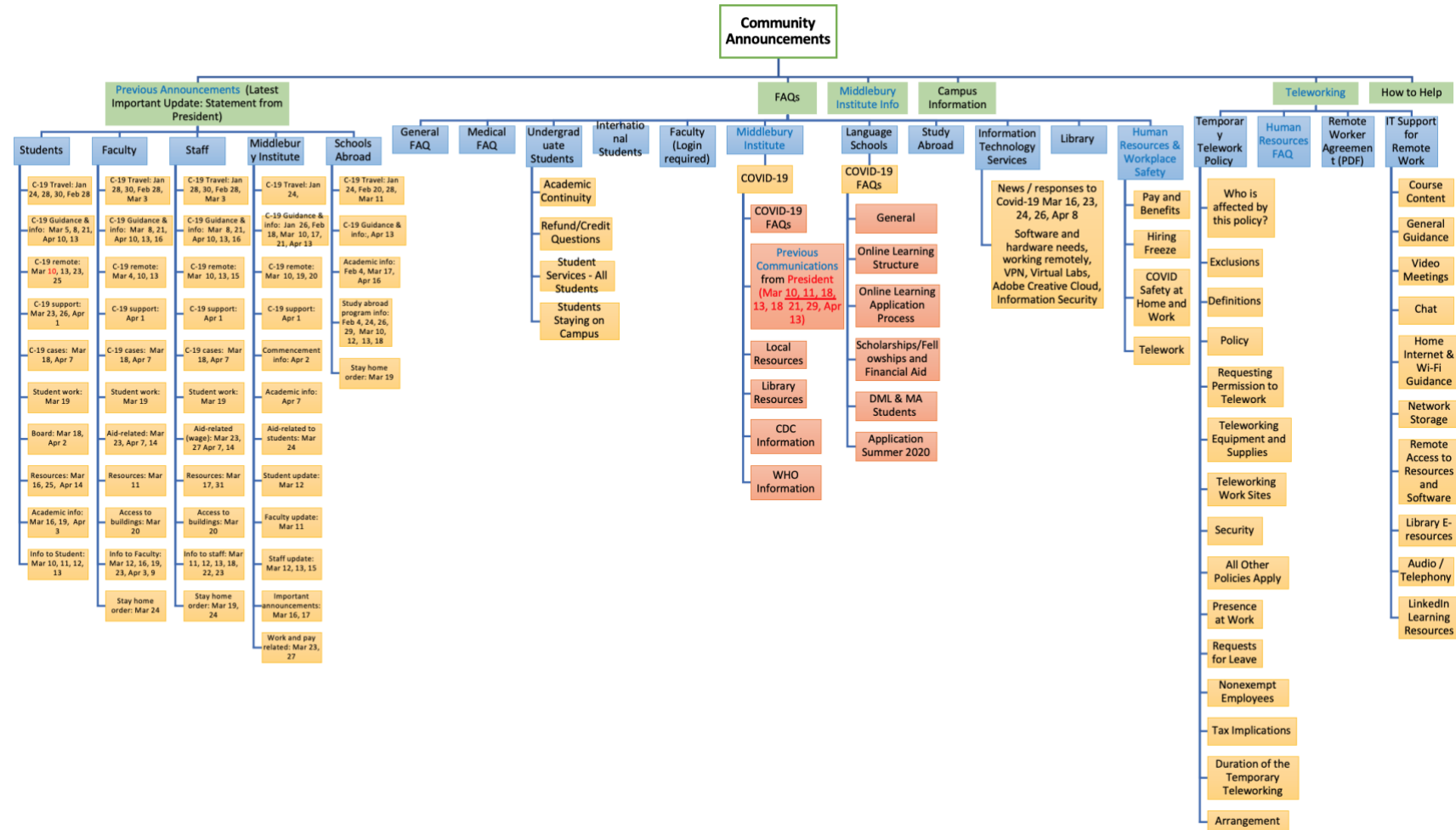
COVID-19 Response Chart Based on Publicly Available Information of the International Christian University, Japan



Note. The red color represents messages from the President.

Figure 8

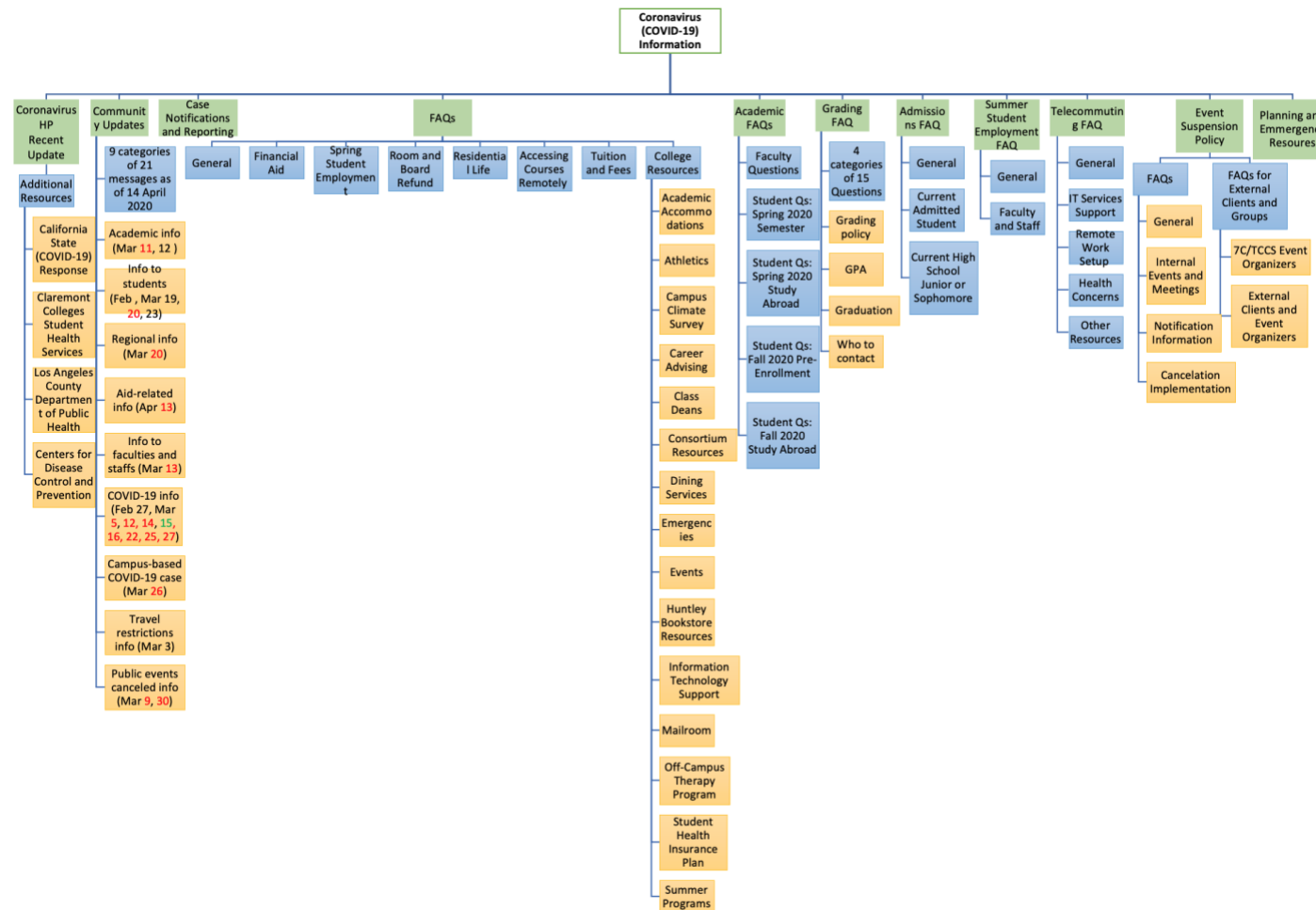
COVID-19 Response Chart Based on Publicly Available Information of the Middlebury College



Note. The red color represents messages from the president. The blue color represents overlaps between categories.

**Figure 9**

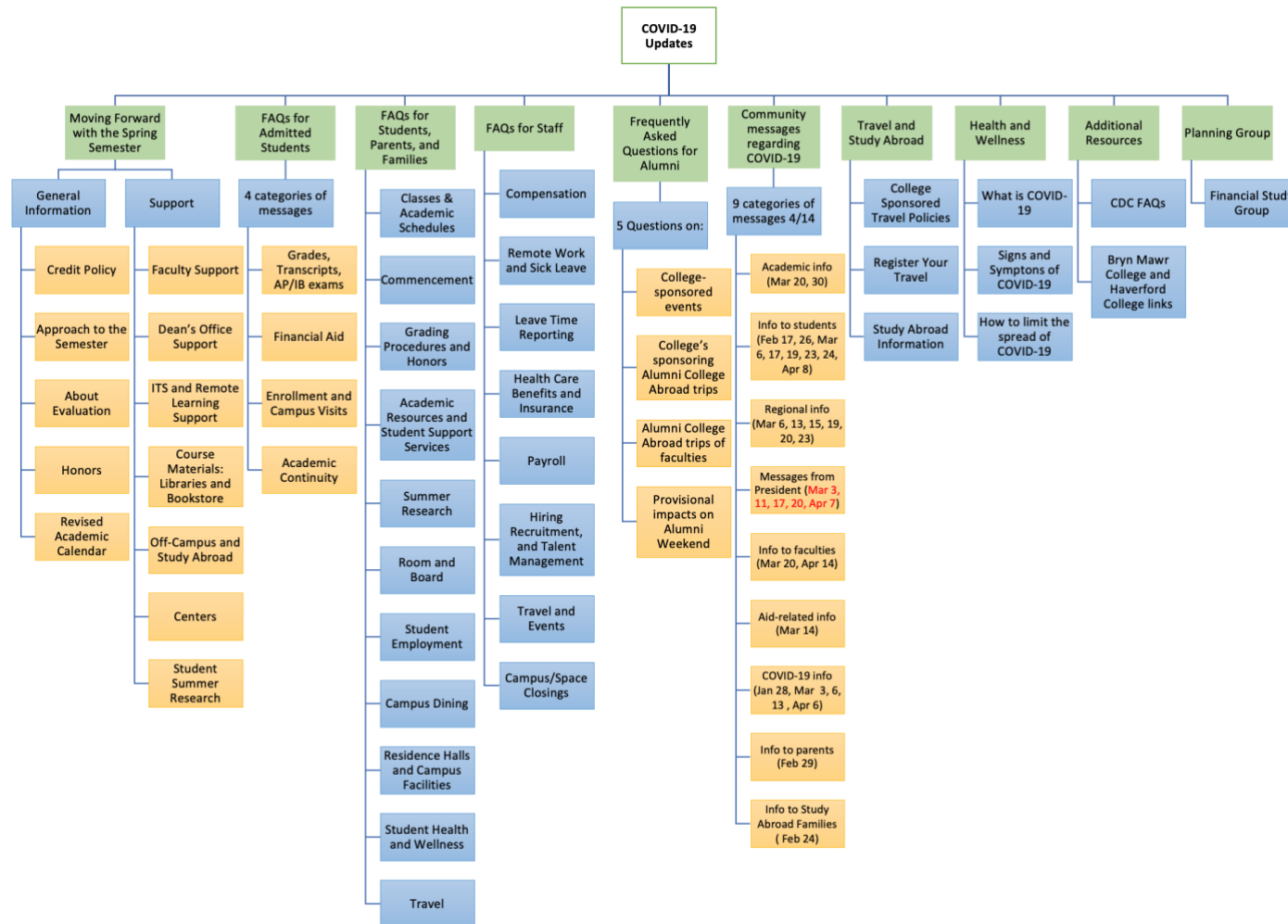
*COVID-19 Response Chart Based on Publicly Available Information of the Pomona College*



*Note.* The red color represents messages from the president. The green color represents a message from the president with other authority.

**Figure 10**

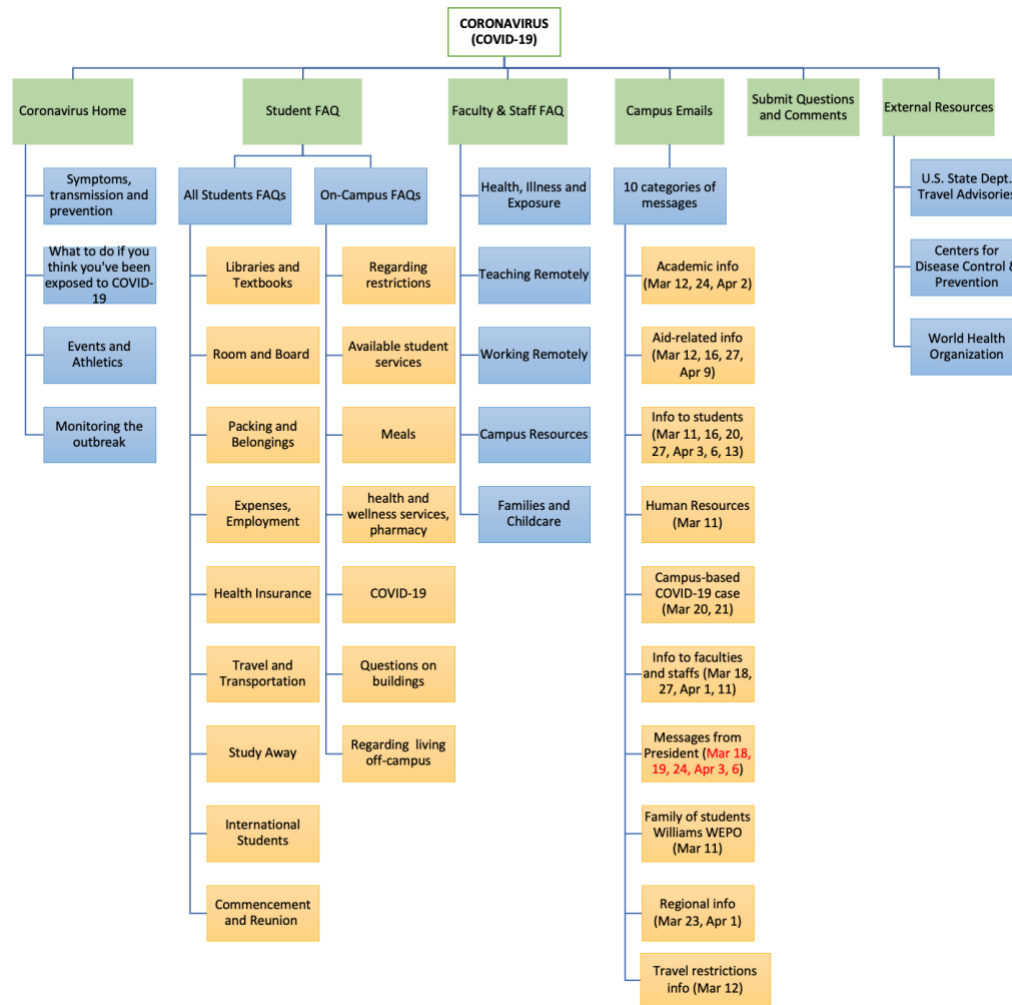
*COVID-19 Response Chart Based on Publicly Available Information of the Swarthmore College*



*Note.* The red color represents messages from the president.

**Figure 11**

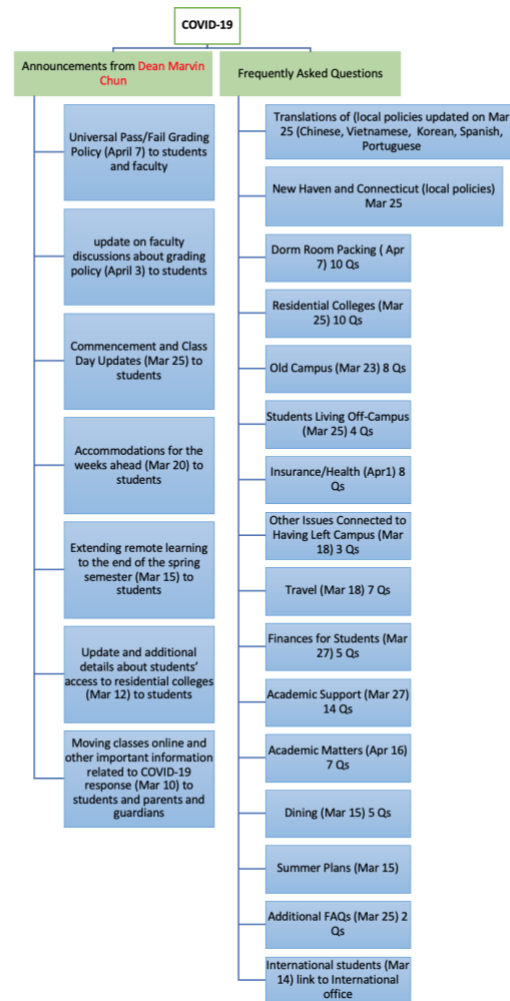
*COVID-19 Response Chart Based on Publicly Available Information of the Williams College*



*Note.* The red color represents messages from the president.

**Figure 12**

*COVID-19 Response Chart Based on Publicly Available Information of the Yale College*



*Note.* The red color represents messages from the dean.

### References

- Community Announcement: Important Update*. (n.d.). Middlebury.  
<https://www.middlebury.edu/office/midd2021>
- Coronavirus (COVID-19)*. (n.d.). Williams. <https://www.williams.edu/coronavirus/>
- Coronavirus (COVID-19) Information*. (n.d.). Central Connecticut State University.  
<https://www.ccsu.edu/coronavirus/dashboard.html>
- Coronavirus (COVID-19): Information for the Harvard College Community*. (n.d.). Harvard College. <https://college.harvard.edu/ourpathforward>
- Coronavirus (COVID-19): Information for the Pomona College Community*. (n.d.). Pomona College. <https://www.pomona.edu/coronavirus>
- Coronavirus Information*. (n.d.). Haverford College. <https://www.haverford.edu/be-safe>
- COVID-19 Announcements and FAQs*. (n.d.). Yale College. <https://yalecollege.yale.edu/policies-procedures/covid-19-faq>
- COVID-19*. (n.d.). Amherst College. <https://www.amherst.edu/admission/covid-19-considerations>
- COVID-19 Information*. (n.d.). Swarthmore. <https://www.swarthmore.edu/covid-19-information>
- COVID-19 Updates*. (n.d.). Eastern Connecticut State University.  
<https://www.easternct.edu/reopening/index.html>
- Information and Updates: Coronavirus Disease 2019 (COVID-19)*. (n.d.). Barnard.  
<https://alert.barnard.edu/>
- Kawakita, J. (1991). *The Original KJ Method* (Revised Edition), Kawakita Research Institute.
- News: ICU's Response to the Novel Coronavirus Infection (COVID-19)*. (n.d.). International Christian University. <https://www.icu.ac.jp/en/news/2003031445.html>