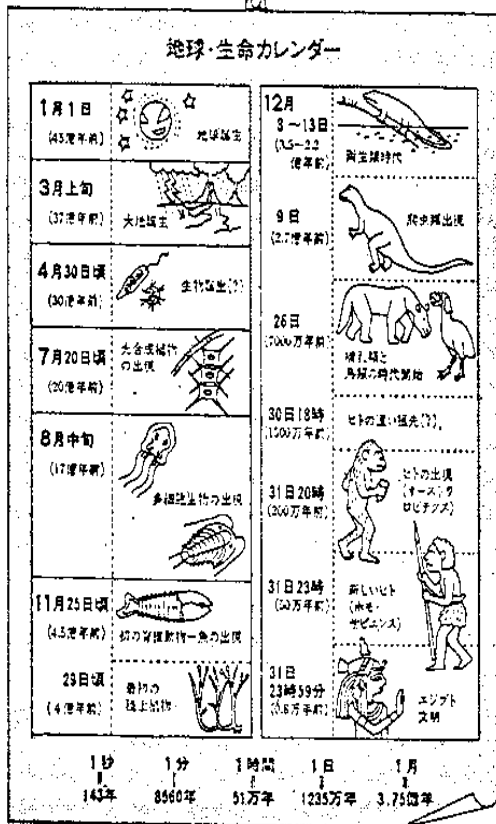
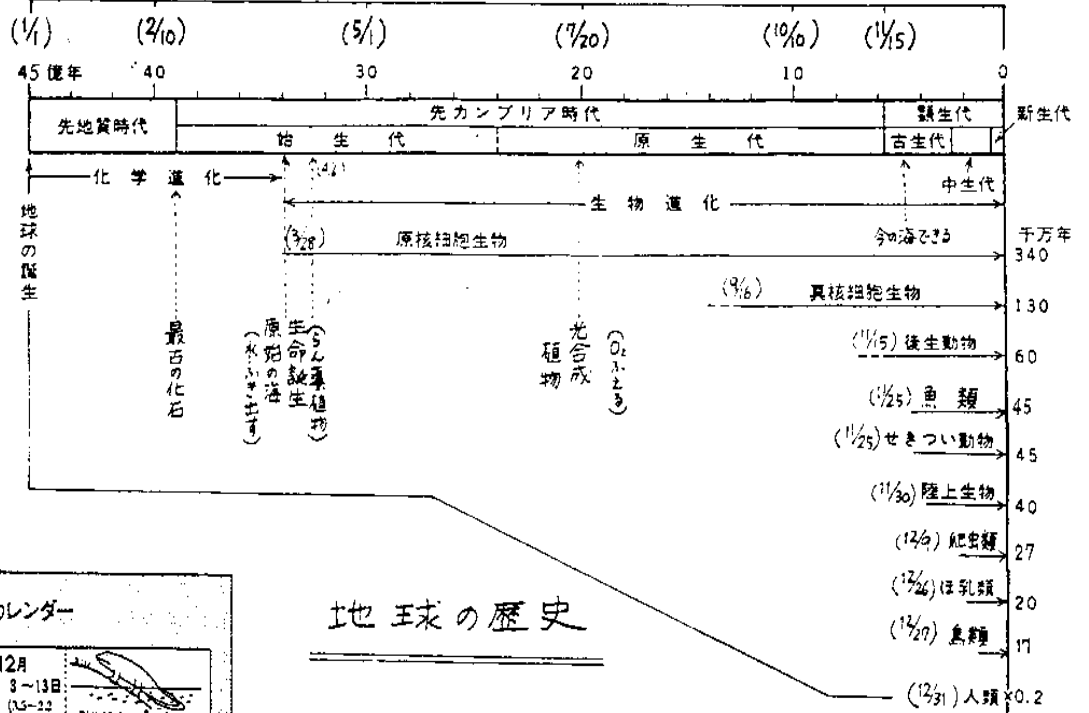


生命の誕生



地球の歴史

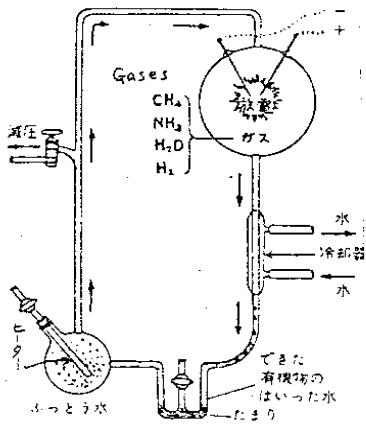
Table 2-1. Comparison of the chemical composition of the human body with that of seawater and the earth's crust. Values are percentages of total numbers of atoms.

Human body		Seawater		Earth's crust	
H	63	H	66	O	47
O	25.5	O	33	Si	28
C	9.5	Cl	0.33	Al	7.9
N	1.4	Na	0.28	Fe	4.5
Ca	0.31	Mg	0.033	Ca	3.5
P	0.22	S	0.017	Na	2.5
Cl	0.03	Ca	0.006	K	2.5
K	0.06	K	0.006	Mg	2.2
S	0.05	C	0.0014	Ti	0.46
Na	0.03	Br	0.0005	H	0.22
Mg	0.01			C	0.19
All others	< 0.01	All others	< 0.1	All others	< 0.1

Source: Biology: An Appreciation of Life, CRM Books, Del Mar, California, 1972.

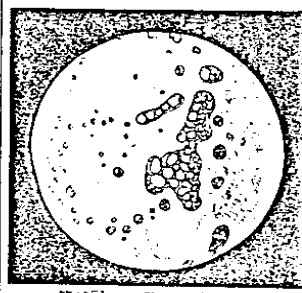
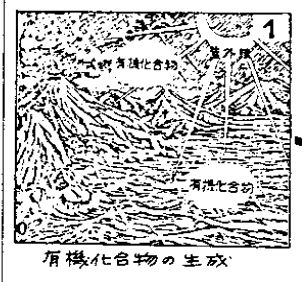
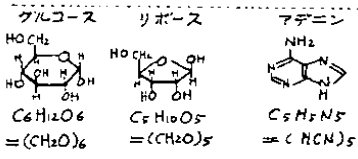
*Because figures have been rounded off, totals do not amount to 100.

原始大気の再現実験

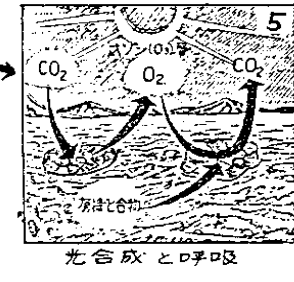
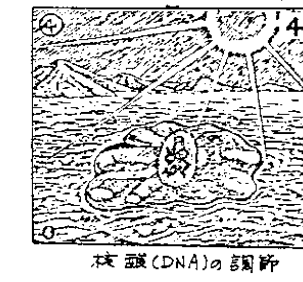
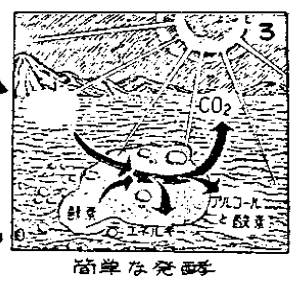


第32図 ミラーの実験装置 (BSCS 古生物4巻)

Products
 { formaldehyde (H₂C=O)
 hydrogen cyanide (H-C≡N)
 amino acids
 sugars (glucose, ribose)
 adenine



化学進化から生物進化へ



[▲元\(講義資料\)へ戻る](#)